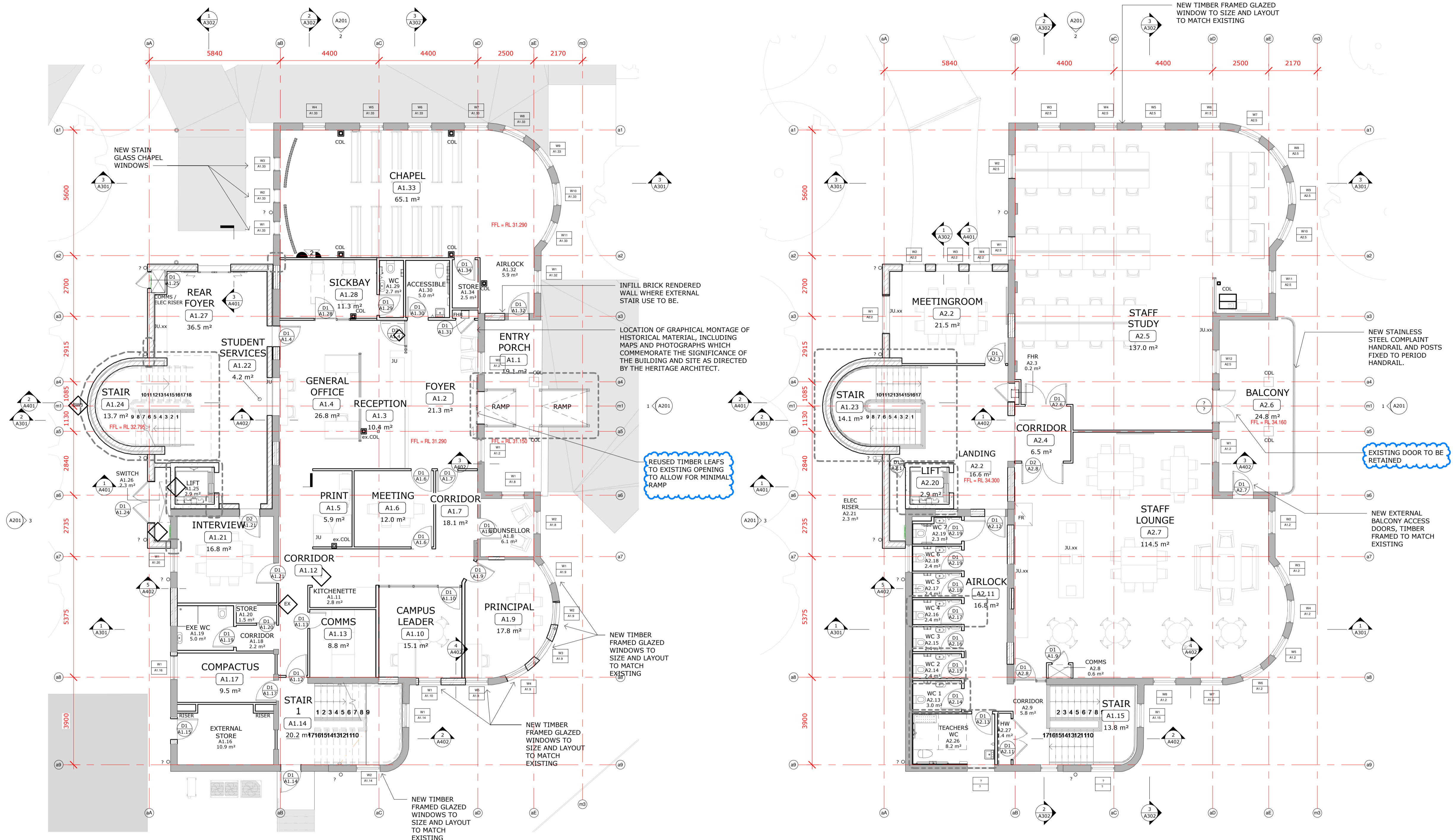
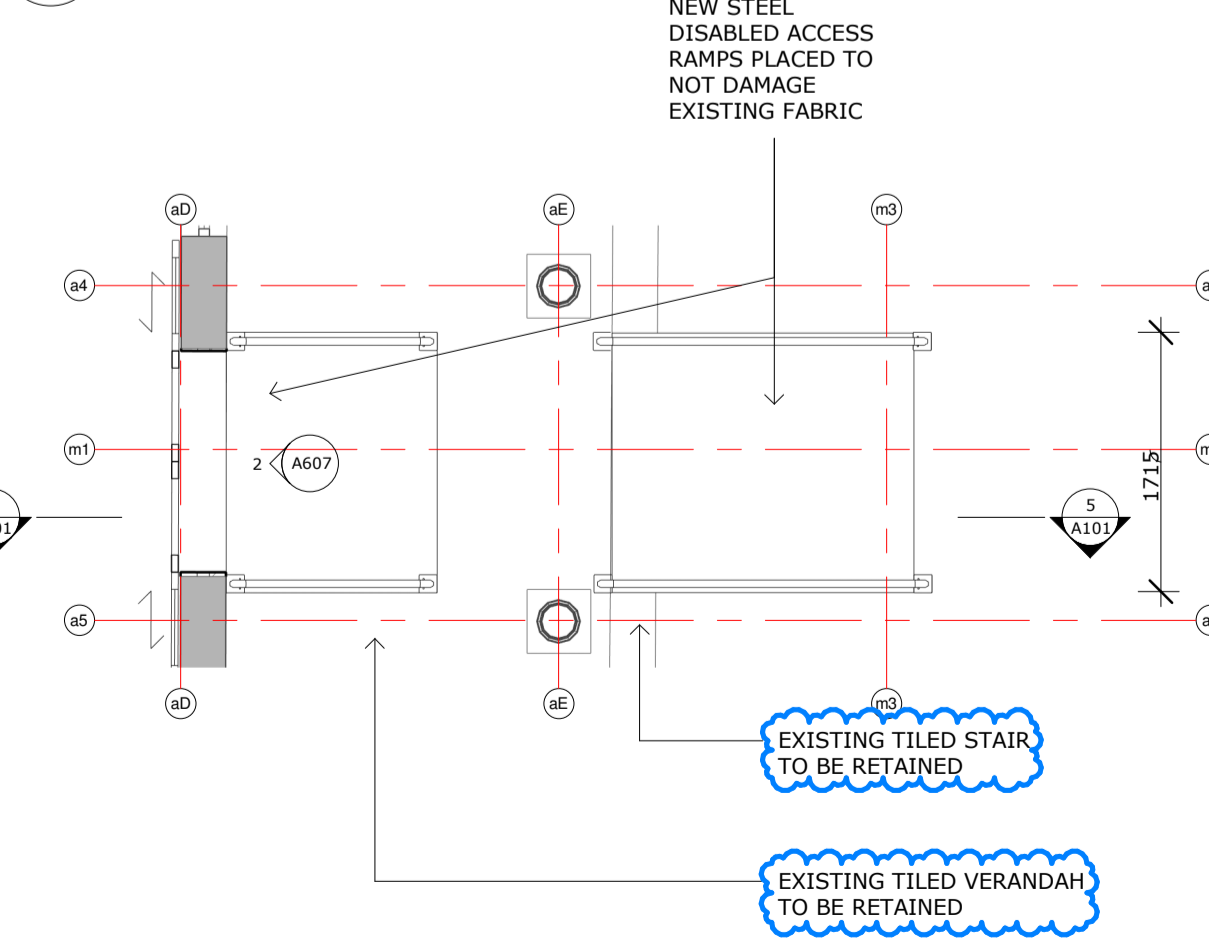


ALL NEW WORK TO EXISTING EXTERNAL FABRIC TO BE UNDER TAKEN UNDER DIRECTION OF HERITAGE ARCHITECT, SOHI AND SCS.

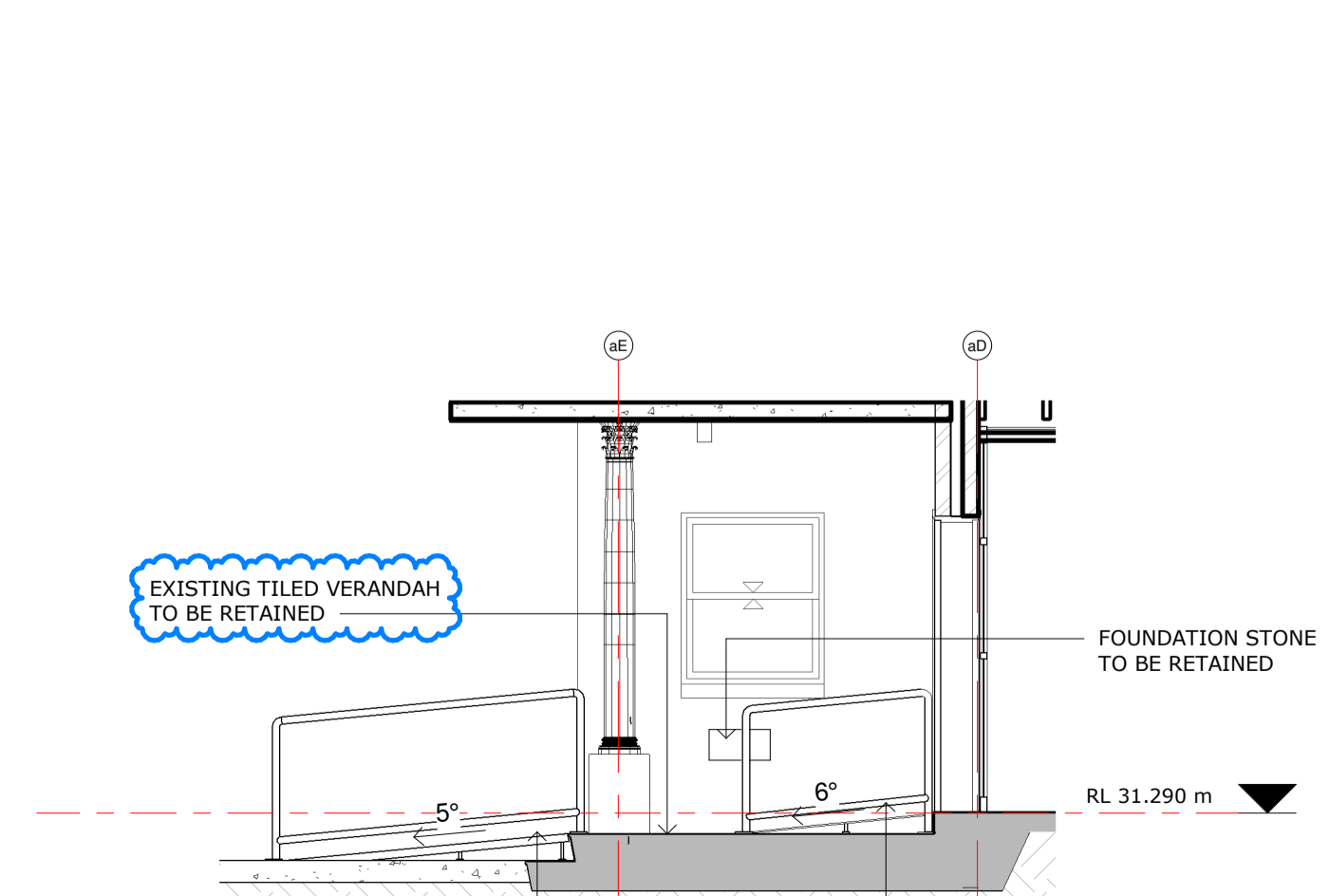


1 BLD A - LEVEL 1 - NEW
A031 1 : 100

2 BLD A - LEVEL 2 - NEW
A031 1 : 100



3 BLD A - LEVEL 1 - RAMP & COL.
A101 1 : 50



5 BLK A - SPECIAL - ENTRY RAMP
A059 1 : 50

COPYRIGHT © MUNNS SLY MOORE ARCHITECTS 2015
Reproduction of the whole or part of the document constitutes an infringement of copyright. The information, ideas and concepts contained in this document are confidential. The recipient(s) of this document is/are prohibited from disclosing such information, ideas and concepts to any person without the prior written consent of the copyright holder.

- NOTES
- Use figured dimensions. Do not scale from drawings.
 - All dimensions are in millimetres, except levels and drawings to scale of 1:500 and smaller which are given in metres.
 - Drawings to be read in conjunction with specifications and/or schedules.
 - Contractor to verify all dimensions and levels on site prior to commencing any work or making of shop drawings, and seek instructions if any discrepancies are found.

| NO. | DATE | DESCRIPTION |
|-----|----------|------------------------------|
| 17 | 07/02/18 | REISSUE FOR DA APPROVAL |
| 16 | 31/01/18 | TENDER REVIEW |
| 15 | 07/12/17 | ISSUE FOR DA |
| 14 | 10/11/17 | 60% ISSUE |
| 13 | 20/10/17 | AMENDED FOR FOR REVIEW |
| 12 | 16/10/17 | RE ISSUE FOR SCHOOL APPROVAL |
| 11 | 11/10/17 | SCHOOL APPROVAL |
| 10 | 21/09/17 | FOR COORDINATION |
| 9 | 13/09/17 | INFORMATION ONLY |
| 8 | 29/08/17 | INFORMATION ONLY |
| 7 | 28/07/17 | CONSULTANT COORDINATION |
| 6 | 16/06/17 | ISSUE FOR DA APPROVAL |
| 5 | 01/05/17 | ISSUE FOR DA REVIEW |
| 4 | 08/05/17 | FOR COORDINATION |
| 3 | 05/04/17 | FOR INFORMATION |
| 2 | 10/02/17 | FOR INFORMATION |
| 1 | 14/12/16 | FOR INFORMATION |

STRUCTURAL + ENVIRONMENTAL



HYDRAULIC + CIVIL
AJ Whipps Consulting Group
2/101 Union St, McMahons Point
NSW 2060 Australia
t: 61 2 8923 8444
f: 61 2 8923 8484
sydney@ajwhipps.com.au
ajwhipps.com.au



LANDSCAPE ARCHITECT
Umbaco
LANDSCAPE ARCHITECTS PTY LTD
Suite 104, 283 Alfred Street
North Sydney NSW 2060
T 02 9955 6772
www.umbaco.com.au



MUNNS SLY MOORE architects

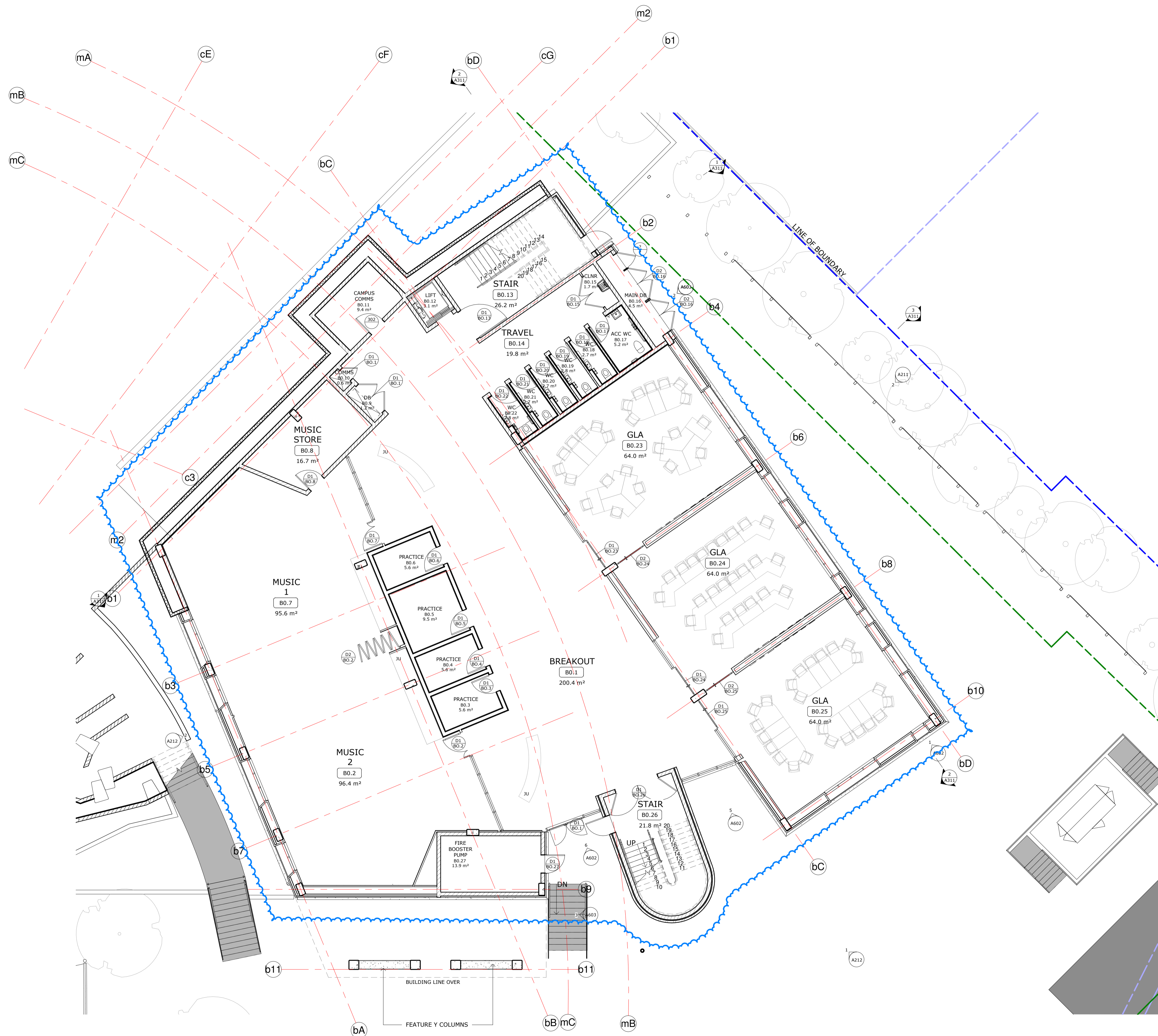
MUNNS SLY MOORE ARCHITECTS PTY LTD
9 Hall Street | PO Box 5093 | Lyneham ACT 2602 Australia
P + 61 2 6248 8922 F + 61 2 6248 8300
www.munnslymoore.com.au

DRAWING
BLD A - FLOOR PLANS - LEVELS 1 + 2

PROJECT
MARIST COLLEGE
PENSHURST - STH
HURSTVILLE SITE
(14C11)

LOT 4 DP 790242 CITY SOUTH HURSTVILLE
DATE 11/16/16 FILE \MUNNS-ARCHITECTS\Projects\Penhurst\My Documents\3973_TEN_WF-17_Detailed\munnslymoore.com.au.rvt
DRAWN AB CHECKED CJ VERIFIED EI
STATUS FOR AUTH. APPROVAL

As indicated @ A1 NORTH
PROJECT NO. 3973 DRAWING NO. A101 REVISION 17



COPYRIGHT © MUNNS SLY MOORE ARCHITECTS 2015
 Reproduction of the whole or part of the document constitutes an infringement of copyright. The information, ideas and concepts contained in this document are confidential. The recipient(s) of this document is/are prohibited from disclosing such information, ideas and concepts to any person without the prior written consent of the copyright holder.

- NOTES
1. Use figured dimensions. Do not scale from drawings.
 2. All dimensions are in millimetres, except levels and drawings to scale of 1:500 and smaller which are given in metres.
 3. Drawings to be read in conjunction with specifications and/or schedules.
 4. Contractor to verify all dimensions and levels on site prior to commencing any work or making of shop drawings, and seek instructions if any discrepancies are found.

| NO. | DATE | DESCRIPTION |
|-----|----------|--|
| 12 | 7/12/17 | ISSUE FOR DA |
| 11 | 06/12/17 | For Co-ordination |
| 10 | 10/11/17 | 60% ISSUE |
| 9 | 21/09/17 | FOR COORDINATION |
| 8 | 13/09/17 | INFORMATION ONLY |
| 7 | 29/08/17 | INFORMATION ONLY |
| 6 | 28/07/17 | CONSULTANT COORDINATION |
| 5 | 16/06/17 | ISSUE FOR DA APPROVAL |
| 4 | 18/05/17 | FOR INFORMATION - MINOR PLANNING CHANGES |
| 3 | 08/05/17 | FOR COORDINATION |
| 2 | 10/02/17 | FOR INFORMATION |
| 1 | 14/12/16 | FOR INFORMATION |

STRUCTURAL + ENVIRONMENTAL

| NO. | DATE | DESCRIPTION |
|-----|----------|--|
| 12 | 7/12/17 | ISSUE FOR DA |
| 11 | 06/12/17 | For Co-ordination |
| 10 | 10/11/17 | 60% ISSUE |
| 9 | 21/09/17 | FOR COORDINATION |
| 8 | 13/09/17 | INFORMATION ONLY |
| 7 | 29/08/17 | INFORMATION ONLY |
| 6 | 28/07/17 | CONSULTANT COORDINATION |
| 5 | 16/06/17 | ISSUE FOR DA APPROVAL |
| 4 | 18/05/17 | FOR INFORMATION - MINOR PLANNING CHANGES |
| 3 | 08/05/17 | FOR COORDINATION |
| 2 | 10/02/17 | FOR INFORMATION |
| 1 | 14/12/16 | FOR INFORMATION |



HYDRAULIC + CIVIL
 AJ Whipps Consulting Group
 2/101 Union St, McMahons Point
 NSW 2060 Australia
 t: 61 2 8923 8444
 f: 61 2 8923 8484
 sydney@ajwhipps.com.au
 ajwhipps.com.au



LANDSCAPE ARCHITECT
Umbaco
 LANDSCAPE ARCHITECTS PTY LTD
 Suite 104, 283 Alfred Street
 North Sydney NSW 2060
 T 02 9555 6772
 www.umbaco.com.au



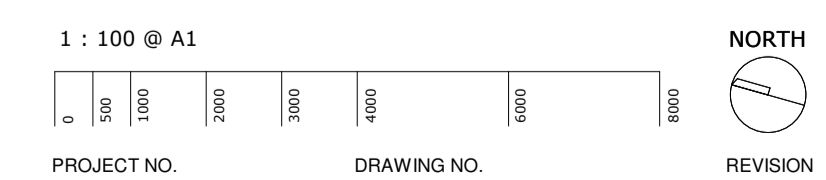
MUNNS SLY MOORE architects

MUNNS SLY MOORE ARCHITECTS PTY LTD ABN 30 008 534 019
 9 Hall Street | PO Box 5093 | Lyneham ACT 2602 Australia
 P + 61 2 6248 8922 F + 61 2 6248 8300
 Nominated Architect Robert Sly FAIA ACT #331 NSW #6712 www.munnslymoore.com.au

DRAWING
BLD B - FLOOR PLAN - LEVEL 0

PROJECT
**MARIST COLLEGE
 PENSHURST - STH
 HURSTVILLE SITE
 (14C11)**

LOT 4 DP 790242 CITY SOUTH HURSTVILLE
 DATE 11/16/16 FILE C:\Users\jacob\Documents\3973_TEN_WF-17_G001\munnslymoore.com.au
 DRAWN JH CHECKED CJ VERIFIED EI
 STATUS **FOR COORDINATION**



1 : 100 @ A1
 PROJECT NO. 3973 DRAWING NO. A111 REVISION 12

COPYRIGHT © MUNNS SLY MOORE ARCHITECTS 2015
 Reproduction of the whole or part of the document constitutes an infringement of copyright. The information, ideas and concepts contained in this document are confidential. The recipient(s) of this document is/are prohibited from disclosing such information, ideas and concepts to any person without the prior written consent of the copyright holder.

- NOTES
1. Use figured dimensions. Do not scale from drawings.
 2. All dimensions are in millimetres, except levels and drawings to scale of 1:500 and smaller which are given in metres.
 3. Drawings to be read in conjunction with specifications and/or schedules.
 4. Contractor to verify all dimensions and levels on site prior to commencing any work or making of shop drawings, and seek instructions if any discrepancies are found.

| NO. | DATE | DESCRIPTION |
|-----|----------|--|
| 12 | 7/12/17 | ISSUE FOR DA |
| 11 | 10/11/17 | 60% ISSUE |
| 10 | 21/09/17 | FOR COORDINATION |
| 9 | 13/09/17 | INFORMATION ONLY |
| 8 | 29/08/17 | INFORMATION ONLY |
| 7 | 28/07/17 | CONSULTANT COORDINATION |
| 6 | 16/06/17 | ISSUE FOR DA APPROVAL |
| 5 | 01/06/17 | ISSUE FOR DA REVIEW |
| 4 | 18/05/17 | FOR INFORMATION - MINOR PLANNING CHANGES |
| 3 | 08/05/17 | FOR COORDINATION |
| 2 | 10/02/17 | FOR INFORMATION |
| 1 | 14/12/16 | FOR INFORMATION |

STRUCTURAL + ENVIRONMENTAL



HYDRAULIC + CIVIL

AJ Whipps Consulting Group
 2/101 Union St, McMahon's Point
 NSW 2060 Australia
 t: 61 2 8923 8444
 f: 61 2 8923 8484
 sydney@ajwhipps.com.au
 ajwhipps.com.au

BUILDING SERVICES

Level 23, 101 Miller Street
 North Sydney NSW 2060
 Australia
 +61 (0)2 9437 1000
 general@hampg.com.au
 www.hampg.com.au

LANDSCAPE ARCHITECT

LANDSCAPE ARCHITECTS PTY LTD
 Suite 104, 283 Alfred Street
 North Sydney NSW 2060
 T 02 9955 6772
 www.umbaco.com.au

CLIENT

MUNNS SLY MOORE architects

MUNNS SLY MOORE ARCHITECTS PTY LTD ABN 30 008 534 019
 9 Hall Street PO Box 5093 Lyneham ACT 2602 Australia
 P + 61 2 6248 8922 F + 61 2 6248 8300
 Nominated Architect Robert Sly FAIA ACT #331 NSW #612 www.munnslymoore.com.au

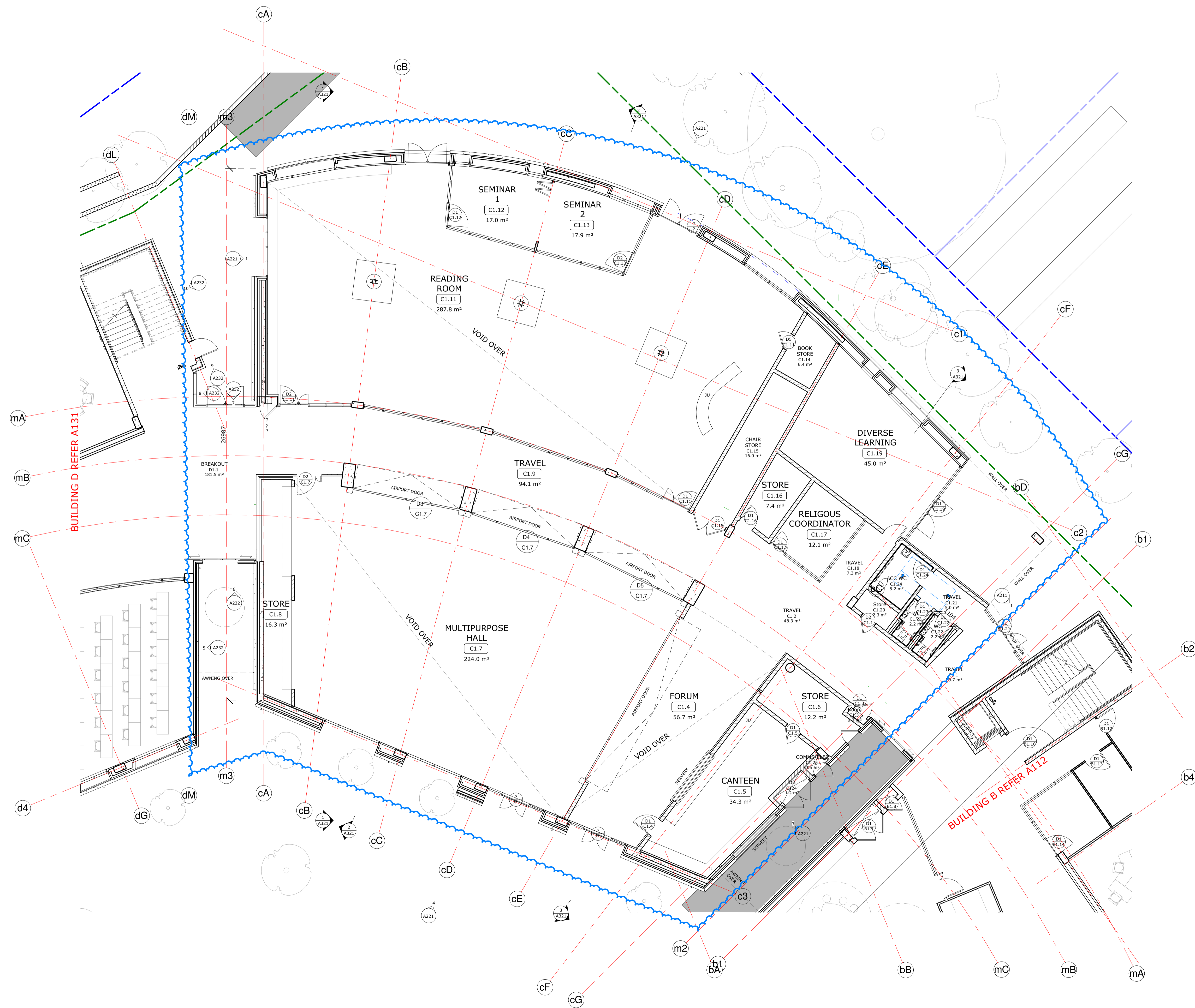
DRAWING
BLD C - FLOOR PLAN - LEVEL 1

PROJECT
MARIST COLLEGE PENSURST - STH HURSTVILLE SITE (14C11)

LOT 4 DP 790242 CITY SOUTH HURSTVILLE
 DATE 11/23/16 FILE C:\Users\sgab9\Documents\3973_TEN_WF-17_GS008\munnslymoore.com.au
 DRAWN CJ CHECKED CJ VERIFIED EI
 STATUS **FOR COORDINATION**

1 : 100 @ A1

PROJECT NO. 3973 DRAWING NO. A121 REVISION 12



BUILDING D REFER A131

BUILDING B REFER A112

COPYRIGHT © MUNNS SLY MOORE ARCHITECTS 2015
 Reproduction of the whole or part of the document constitutes an infringement of copyright. The information, ideas and concepts contained in this document are confidential. The recipient(s) of this document is/are prohibited from disclosing such information, ideas and concepts to any person without the prior written consent of the copyright holder.

- NOTES
1. Use figured dimensions. Do not scale from drawings.
 2. All dimensions are in millimetres, except levels and drawings to scale of 1:500 and smaller which are given in metres.
 3. Drawings to be read in conjunction with specifications and/or schedules.
 4. Contractor to verify all dimensions and levels on site prior to commencing any work or making of shop drawings, and seek instructions if any discrepancies are found.

| NO. | DATE | DESCRIPTION |
|-----|----------|--|
| 17 | 7/12/17 | ISSUE FOR DA |
| 16 | 06/12/17 | For Co-ordination |
| 15 | 10/11/17 | 60% ISSUE |
| 14 | 25/10/17 | 50% SIGNOFF |
| 13 | 18/10/17 | AMENDED FOR SCHOOL APPROVAL |
| 12 | 16/10/17 | RE ISSUE FOR SCHOOL APPROVAL |
| 11 | 11/10/17 | SCHOOL APPROVAL |
| 10 | 21/09/17 | FOR COORDINATION |
| 9 | 13/09/17 | INFORMATION ONLY |
| 8 | 29/08/17 | INFORMATION ONLY |
| 7 | 28/07/17 | CONSULTANT COORDINATION |
| 6 | 16/06/17 | ISSUE FOR DA APPROVAL |
| 5 | 01/06/17 | ISSUE FOR DA REVIEW |
| 4 | 18/05/17 | FOR INFORMATION - MINOR PLANNING CHANGES |
| 3 | 08/05/17 | FOR COORDINATION |
| 2 | 10/02/17 | FOR INFORMATION |
| 1 | 14/12/16 | FOR INFORMATION |
| NO. | DATE | DESCRIPTION |

STRUCTURAL + ENVIRONMENTAL

| NO. | DATE | DESCRIPTION |
|-----|----------|--|
| 17 | 7/12/17 | ISSUE FOR DA |
| 16 | 06/12/17 | For Co-ordination |
| 15 | 10/11/17 | 60% ISSUE |
| 14 | 25/10/17 | 50% SIGNOFF |
| 13 | 18/10/17 | AMENDED FOR SCHOOL APPROVAL |
| 12 | 16/10/17 | RE ISSUE FOR SCHOOL APPROVAL |
| 11 | 11/10/17 | SCHOOL APPROVAL |
| 10 | 21/09/17 | FOR COORDINATION |
| 9 | 13/09/17 | INFORMATION ONLY |
| 8 | 29/08/17 | INFORMATION ONLY |
| 7 | 28/07/17 | CONSULTANT COORDINATION |
| 6 | 16/06/17 | ISSUE FOR DA APPROVAL |
| 5 | 01/06/17 | ISSUE FOR DA REVIEW |
| 4 | 18/05/17 | FOR INFORMATION - MINOR PLANNING CHANGES |
| 3 | 08/05/17 | FOR COORDINATION |
| 2 | 10/02/17 | FOR INFORMATION |
| 1 | 14/12/16 | FOR INFORMATION |
| NO. | DATE | DESCRIPTION |

TTW Taylor Thomson Whitting

HYDRAULIC + CIVIL

AJ Whipps Consulting Group
 2/101 Union St, McMahons Point
 NSW 2060 Australia
 t: 61 2 8923 8444
 f: 61 2 8923 8484
 sydne@ajwhipps.com.au
 ajwhipps.com.au

BUILDING SERVICES

JHA
 Level 23, 101 Miller Street
 North Sydney NSW 2060
 Australia
 +61 (0)2 9437 1000
 general@hbjngroup.com.au
 www.jhaservice.com

LANDSCAPE ARCHITECT

Umbaco
 LANDSCAPE ARCHITECTS PTY LTD
 Suite 104, 283 Alfred Street
 North Sydney NSW 2060
 T 02 9955 6772
 www.umbaco.com.au

CLIENT

Sydney Catholic Schools **MARIST CATHOLIC COLLEGE PENSURST**

MUNNS SLY MOORE architects

MUNNS SLY MOORE ARCHITECTS PTY LTD ABN 30 008 534 019
 9 Hall Street | PO Box 5093 | Lyneham ACT 2602 Australia
 P + 61 2 6248 8922 F + 61 2 6248 8300
 Nominated Architect Robert Sly FAIA ACT #331 NSW #6712 www.munnslymoore.com.au

DRAWING

BLD D - FLOOR PLAN - LEVEL 2

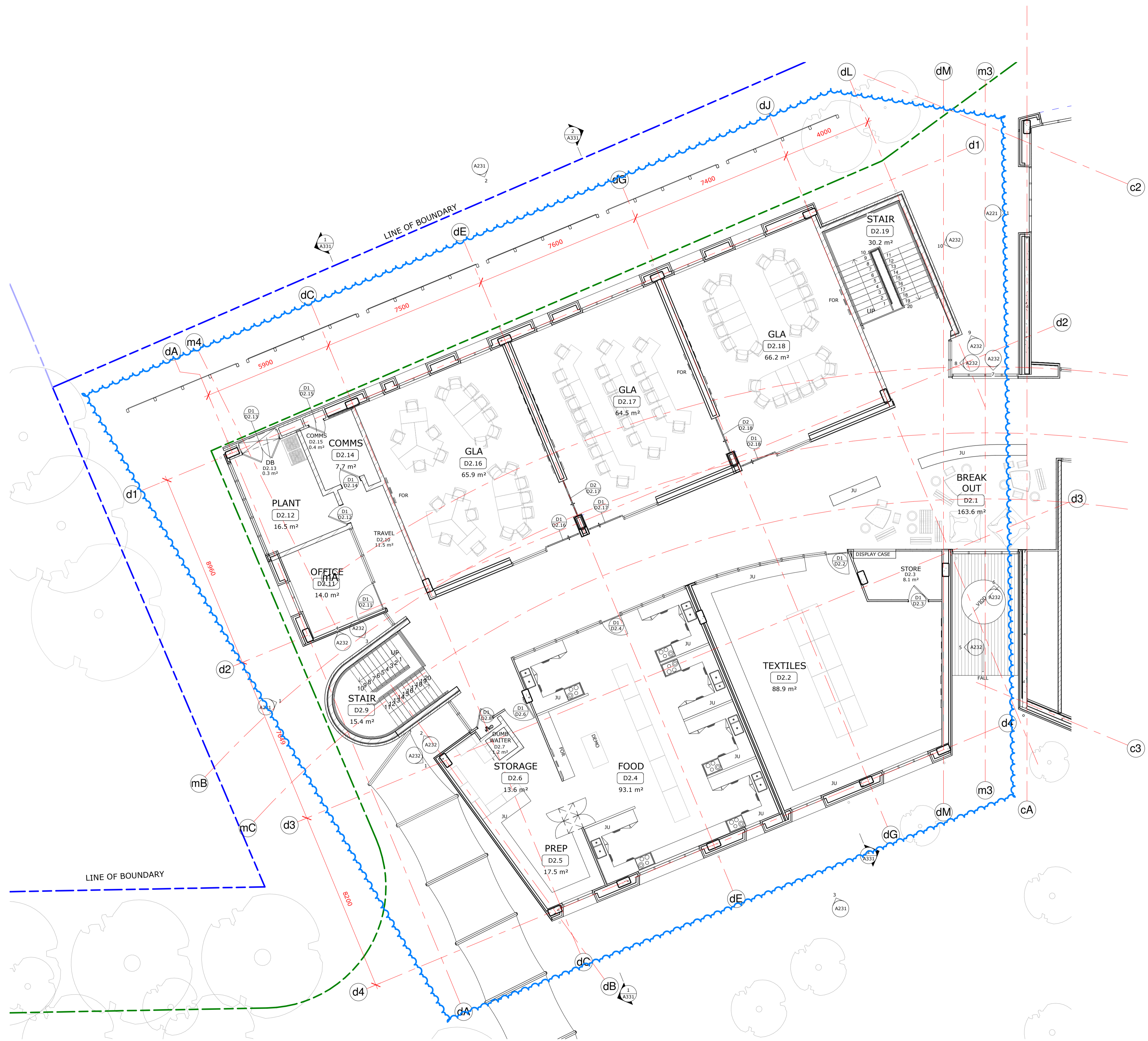
PROJECT

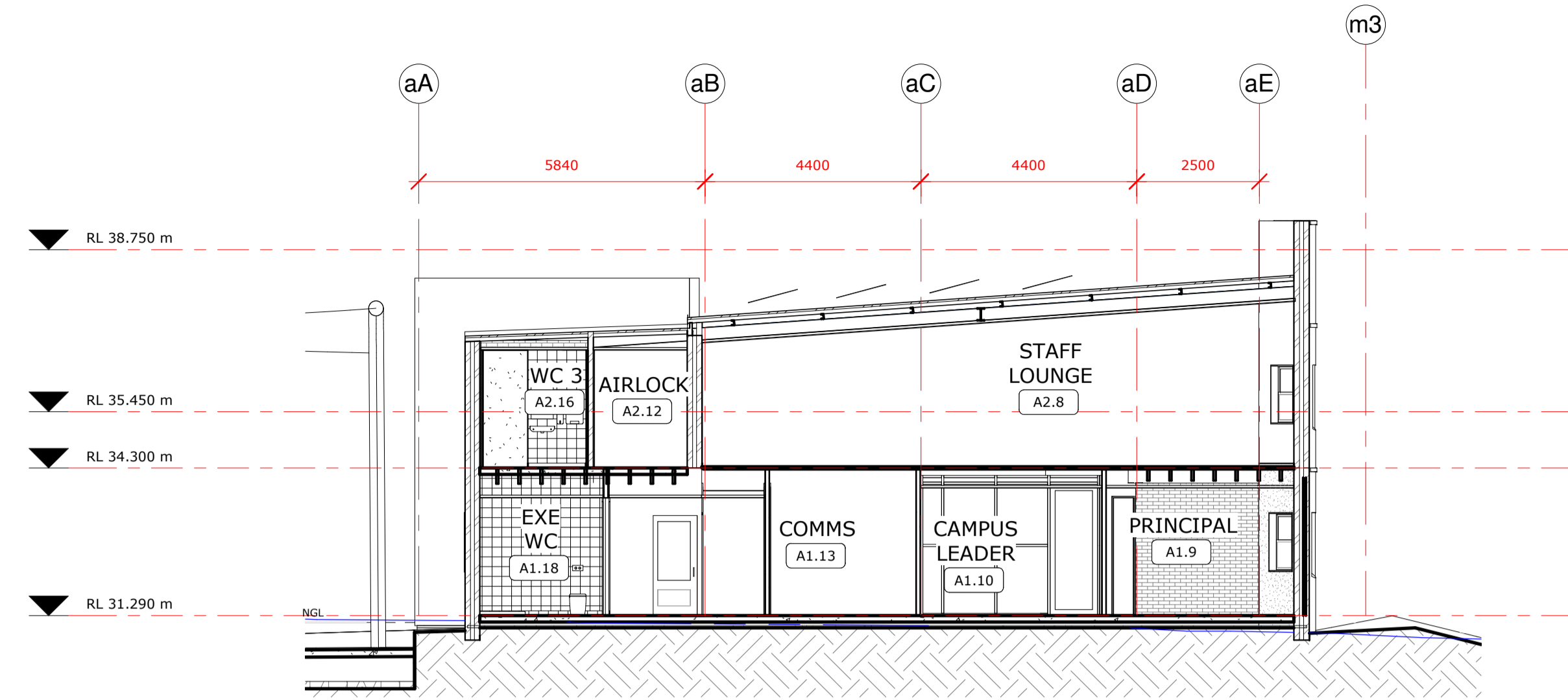
MARIST COLLEGE PENSURST - STH HURSTVILLE SITE (14C11)

LOT 4 DP 790242 CITY SOUTH HURSTVILLE
 DATE 11/17/16 FILE C:\Users\sgab@Documents\3973_TEN_WF-17_G000\munnslymoore.com.au
 DRAWN CJ CHECKED CJ VERIFIED EI
 STATUS **FOR COORDINATION**

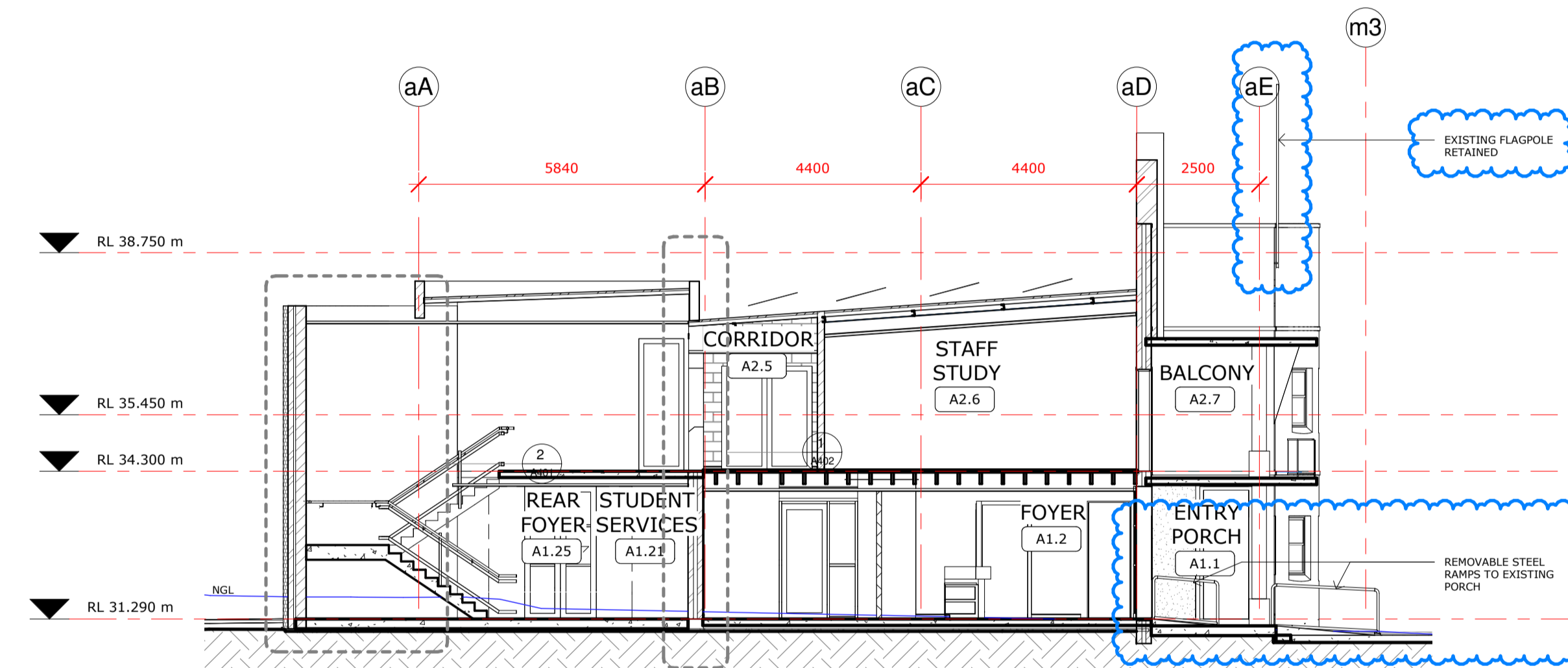
1 : 100 @ A1

PROJECT NO. **3973** DRAWING NO. **A132** REVISION **17**

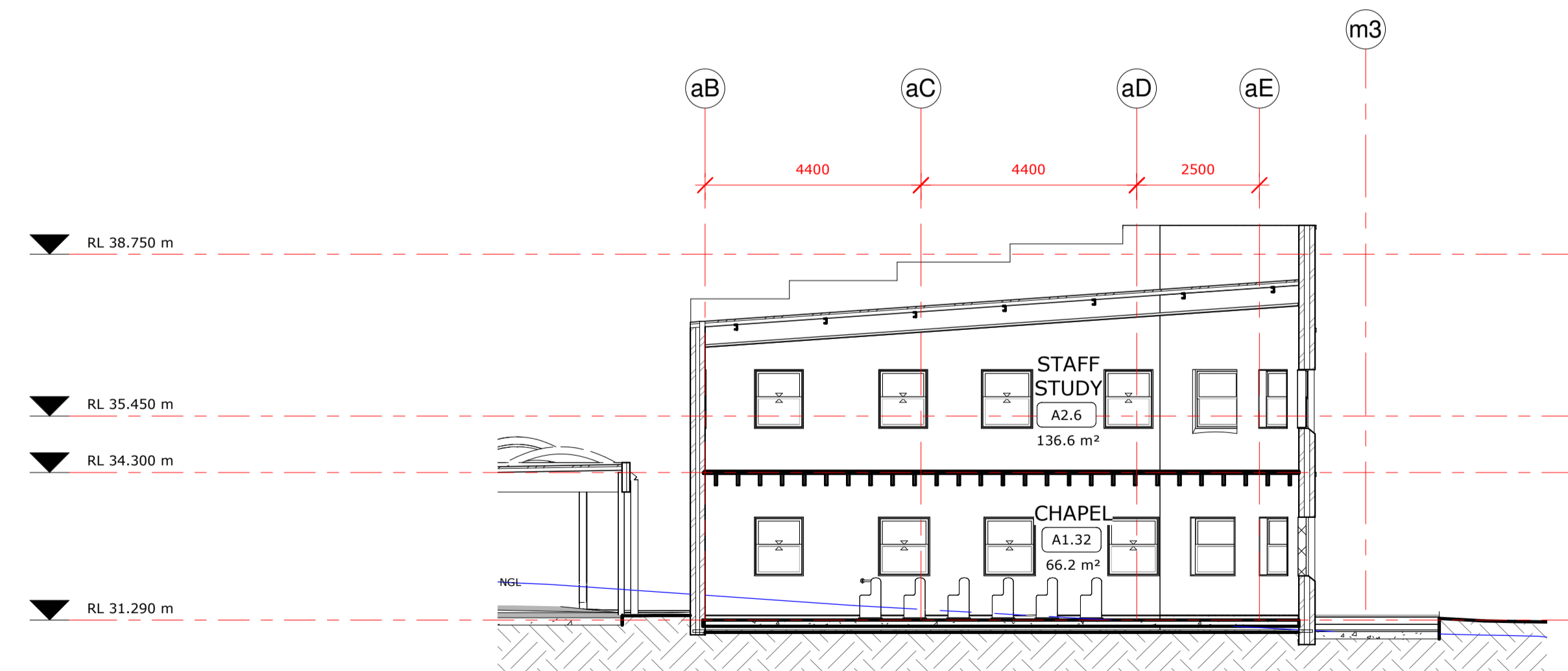




1 BLK A - SECTION A
1 : 100



2 BLK A - SECTION B
1 : 100



3 BLK A - SECTION C
1 : 100

COPYRIGHT © MUNNS SLY MOORE ARCHITECTS 2015
Reproduction of the whole or part of the document constitutes an infringement of copyright. The information, ideas and concepts contained in this document are confidential. The recipient(s) of this document is/are prohibited from disclosing such information, ideas and concepts to any person without the prior written consent of the copyright holder.

- NOTES
1. Use figured dimensions. Do not scale from drawings.
 2. All dimensions are in millimetres, except levels and drawings to scale of 1:500 and smaller which are given in metres.
 3. Drawings to be read in conjunction with specifications and/or schedules.
 4. Contractor to verify all dimensions and levels on site prior to commencing any work or making of shop drawings, and seek instructions if any discrepancies are found.

| NO. | DATE | DESCRIPTION |
|-----|----------|-----------------------|
| 7 | 7/12/17 | ISSUE FOR DA |
| 6 | 10/11/17 | 60% ISSUE |
| 5 | 29/08/17 | INFORMATION ONLY |
| 4 | 16/06/17 | ISSUE FOR DA APPROVAL |
| 3 | 08/05/17 | FOR COORDINATION |
| 2 | 10/02/17 | FOR INFORMATION |
| 1 | 14/12/16 | FOR INFORMATION |

STRUCTURAL + ENVIRONMENTAL



HYDRAULIC + CIVIL
AJ Whipps Consulting Group
2/101 Union St, McMahons Point
NSW 2060 Australia
t: 61 2 8923 8444
f: 61 2 8923 8484
sydney@ajwhipps.com.au
ajwhipps.com.au



LANDSCAPE ARCHITECT
Umbaco
LANDSCAPE ARCHITECTS PTY LTD
Suite 104, 283 Alfred Street
North Sydney NSW 2060
T 02 9955 6772
www.umbaco.com.au



MUNNS SLY MOORE architects

MUNNS SLY MOORE ARCHITECTS PTY LTD ABN 30 088 534 019
9 Hall Street | PO Box 5093 | Lyneham ACT 2602 Australia
P + 61 2 6248 8922 F + 61 2 6248 8300
Nominated Architect Robert Sly FAIA ACT #331 NSW #6712 www.munnslymoore.com.au

DRAWING

BLD A - SECTIONS - SHEET 1

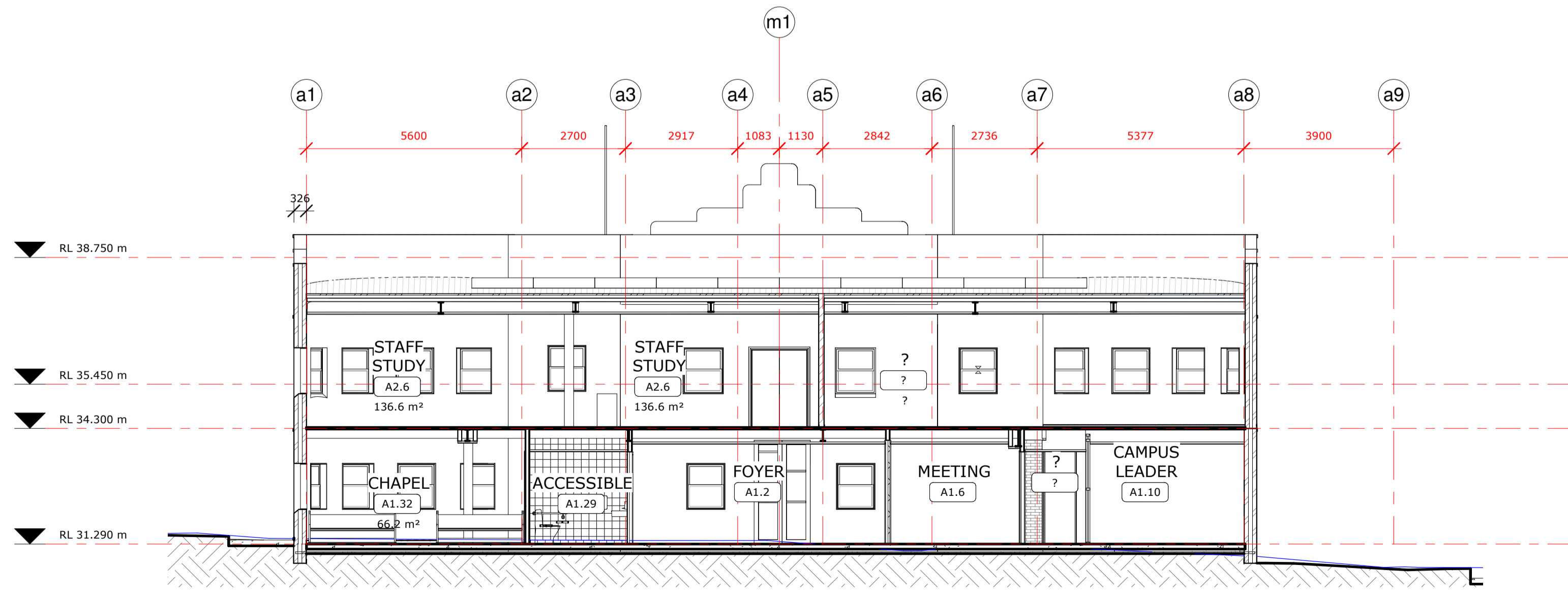
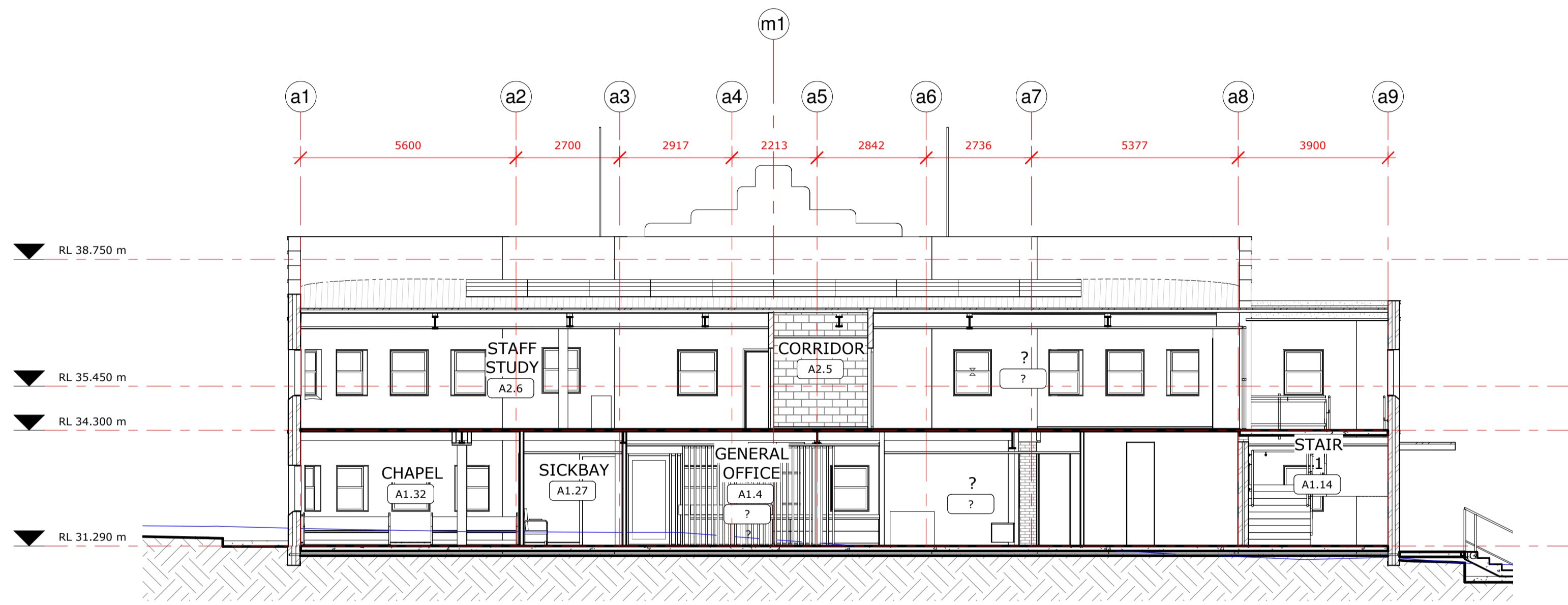
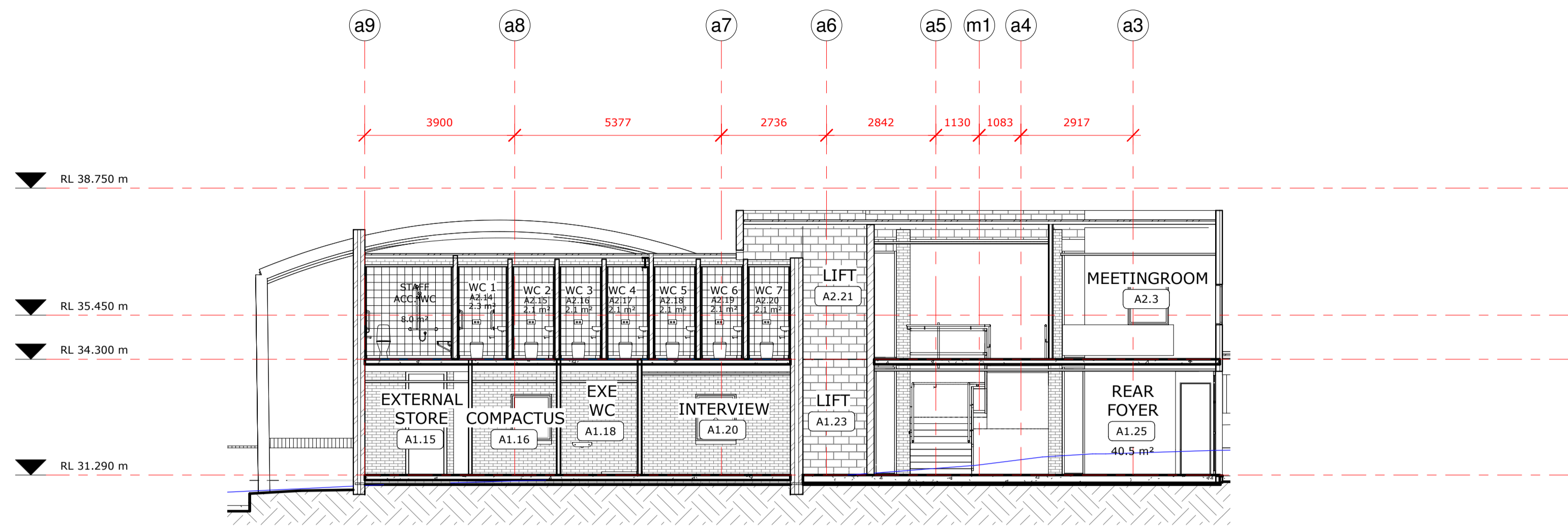
PROJECT
MARIST COLLEGE
PENSHURST - STH
HURSTVILLE SITE
(14C11)

LOT 4 DP 790242 CITY SOUTH HURSTVILLE
DATE 11/16/16 FILE C:\Users\sgab9\Documents\3973_TEN_WF-17_G3008\munnslymoore.com.au
DRAWN AB CHECKED CJ VERIFIED EI
STATUS FOR COORDINATION

1 : 100 @ A1
PROJECT NO. 3973 DRAWING NO. A301 REVISION 7

COPYRIGHT © MUNNS SLY MOORE ARCHITECTS 2015
 Reproduction of the whole or part of the document constitutes an infringement of copyright. The information, ideas and concepts contained in this document are confidential. The recipient(s) of this document is/are prohibited from disclosing such information, ideas and concepts to any person without the prior written consent of the copyright holder.

- NOTES
1. Use figured dimensions. Do not scale from drawings.
 2. All dimensions are in millimetres, except levels and drawings to scale of 1:500 and smaller which are given in metres.
 3. Drawings to be read in conjunction with specifications and/or schedules.
 4. Contractor to verify all dimensions and levels on site prior to commencing any work or making of shop drawings, and seek instructions if any discrepancies are found.



STRUCTURAL + ENVIRONMENTAL



HYDRAULIC + CIVIL
 AJ Whipps Consulting Group
 2/101 Union St, McMahons Point
 NSW 2060 Australia
 t: 61 2 8923 8444
 f: 61 2 8923 8484
 sydney@ajwhipps.com.au
 ajwhipps.com.au



LANDSCAPE ARCHITECT
Umbaco
 LANDSCAPE ARCHITECTS PTY LTD
 Suite 104, 283 Alfred Street
 North Sydney NSW 2060
 T 02 9955 6772
 www.umbaco.com.au



MUNNS SLY MOORE architects

MUNNS SLY MOORE ARCHITECTS PTY LTD ABN 30 088 534 019
 9 Hall Street | PO Box 5093 | Lyneham ACT 2602 Australia
 P + 61 2 6248 8922 F + 61 2 6248 8300
 Nominated Architect Robert Sly FAIA ACT #331 NSW #6712 www.munns Sly Moore.com.au

DRAWING
BLD A - SECTIONS - SHEET 2

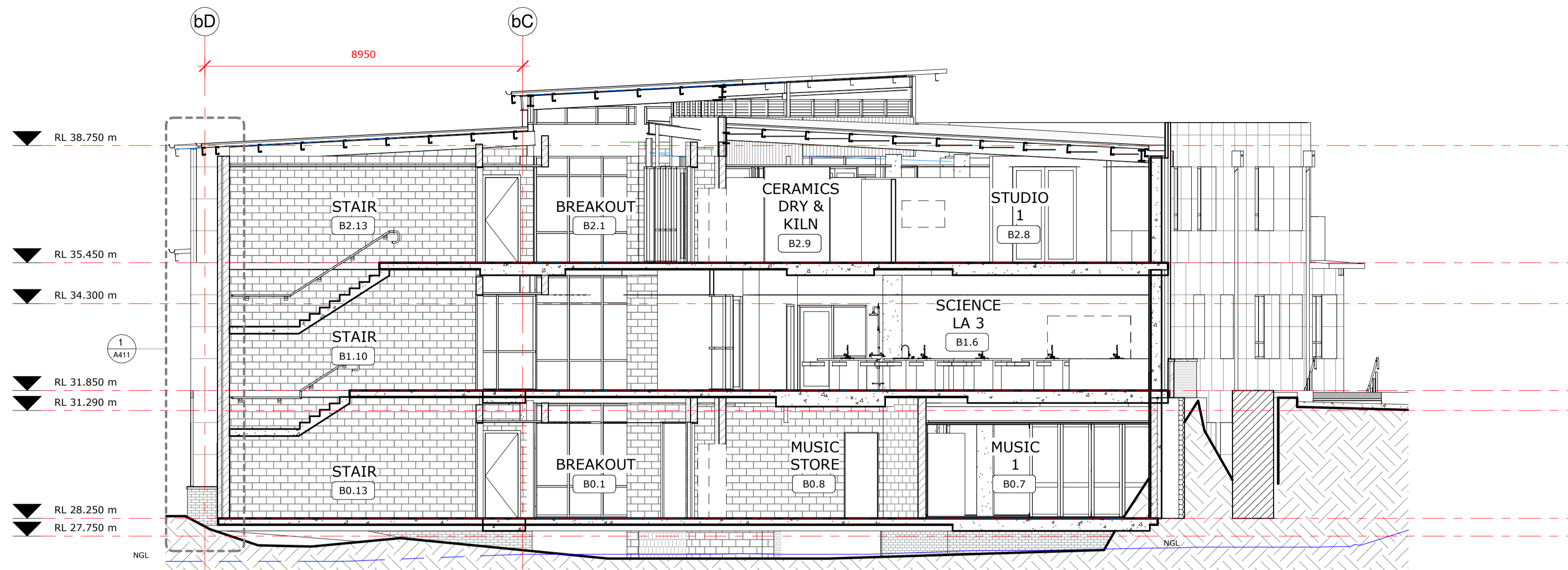
PROJECT
MARIST COLLEGE PENSURST - STH HURSTVILLE SITE (14C11)

| | | | | | |
|-------|----------|---------|---|----------|------------------|
| LOT | 4 | DP | 790242 | CITY | SOUTH HURSTVILLE |
| DATE | 11/16/16 | FILE | C:\Users\jacobr\Documents\3973_TEN_WF-17_cjacobr@munnsslymoore.com.au | | |
| DRAWN | CJ | CHECKED | CJ | VERIFIED | EI |

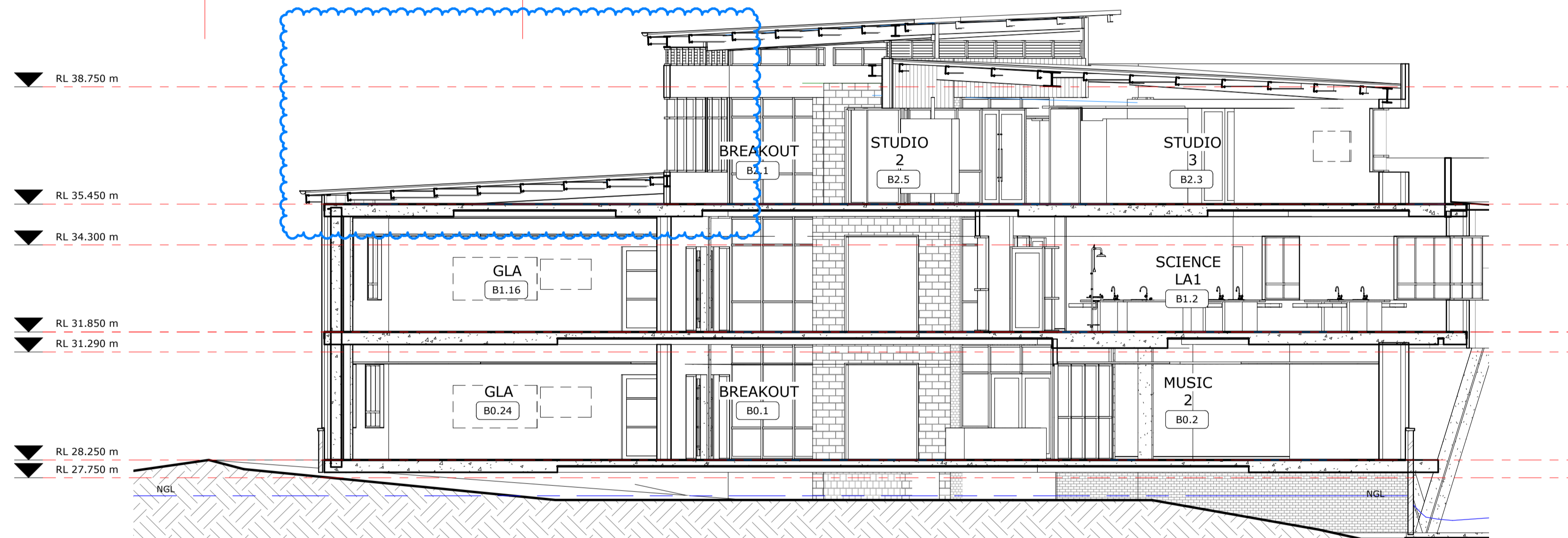
STATUS **FOR COORDINATION**

1 : 100 @ A1

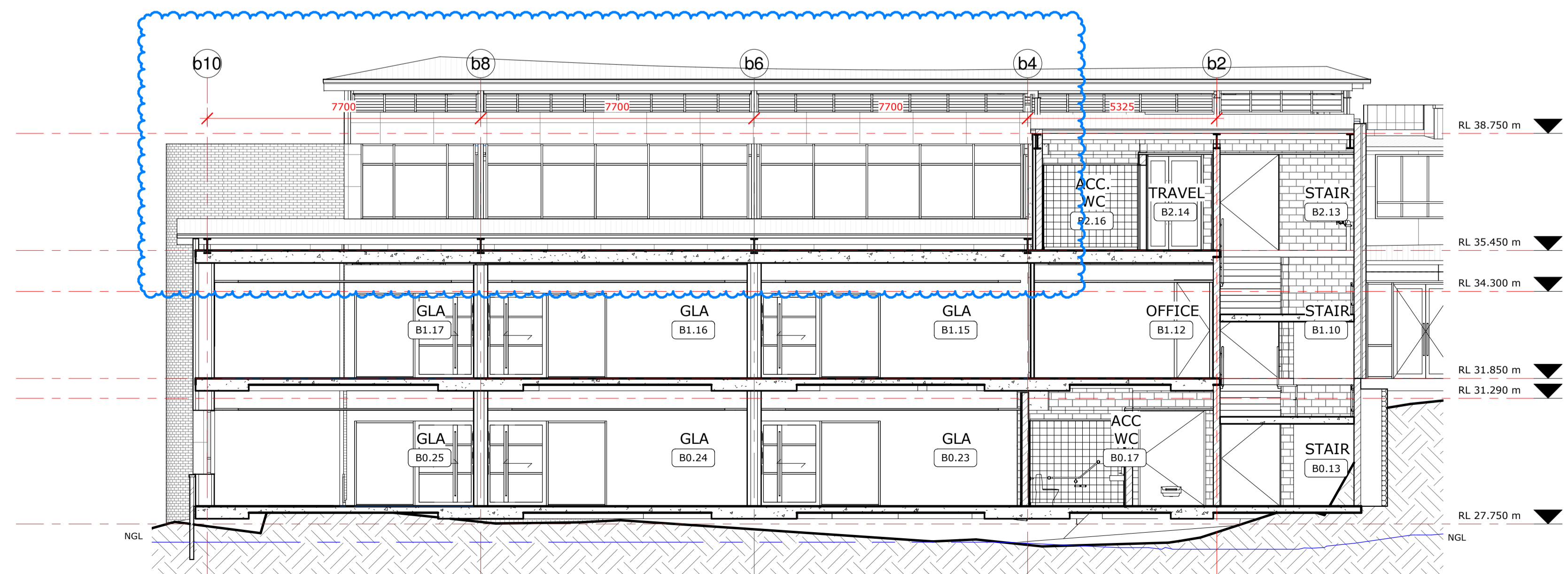
| | | |
|-------------|-------------|----------|
| PROJECT NO. | DRAWING NO. | REVISION |
| 3973 | A302 | 7 |



1 BLK B- SECTION A
1 : 100



3 BLK B- SECTION C
1 : 100



2 BLK B- SECTION D
1 : 100

COPYRIGHT © MUNNS SLY MOORE ARCHITECTS 2015
Reproduction of the whole or part of the document constitutes an infringement of copyright. The information, ideas and concepts contained in this document are confidential. The recipient(s) of this document is/are prohibited from disclosing such information, ideas and concepts to any person without the prior written consent of the copyright holder.

- NOTES
1. Use figured dimensions. Do not scale from drawings.
 2. All dimensions are in millimetres, except levels and drawings to scale of 1:500 and smaller which are given in metres.
 3. Drawings to be read in conjunction with specifications and/or schedules.
 4. Contractor to verify all dimensions and levels on site prior to commencing any work or making of shop drawings, and seek instructions if any discrepancies are found.

| NO. | DATE | DESCRIPTION |
|-----|----------|-----------------------|
| 8 | 7/12/17 | ISSUE FOR DA |
| 7 | 10/11/17 | 60% ISSUE |
| 6 | 21/09/17 | FOR COORDINATION |
| 5 | 29/08/17 | INFORMATION ONLY |
| 4 | 16/06/17 | ISSUE FOR DA APPROVAL |
| 3 | 08/05/17 | FOR COORDINATION |
| 2 | 10/02/17 | FOR INFORMATION |
| 1 | 14/12/16 | FOR INFORMATION |

STRUCTURAL + ENVIRONMENTAL



HYDRAULIC + CIVIL
 AJ Whipps Consulting Group
 2/101 Union St, McMahons Point
 NSW 2060 Australia
 t: 61 2 8923 8444
 f: 61 2 8923 8484
 sydney@ajwhipps.com.au
 ajwhipps.com.au



LANDSCAPE ARCHITECT
Umbaco
 LANDSCAPE ARCHITECTS PTY LTD
 Suite 104, 283 Alfred Street
 North Sydney NSW 2060
 T 02 9955 6772
 www.umbaco.com.au



MUNNS SLY MOORE architects

MUNNS SLY MOORE ARCHITECTS PTY LTD ABN 30 008 534 019
 9 Hall Street | PO Box 5093 | Lyneham ACT 2602 Australia
 P + 61 2 6248 8922 F + 61 2 6248 8300
 Nominated Architect Robert Sly FAIA ACT #331 NSW #6712 www.munnslymoore.com.au

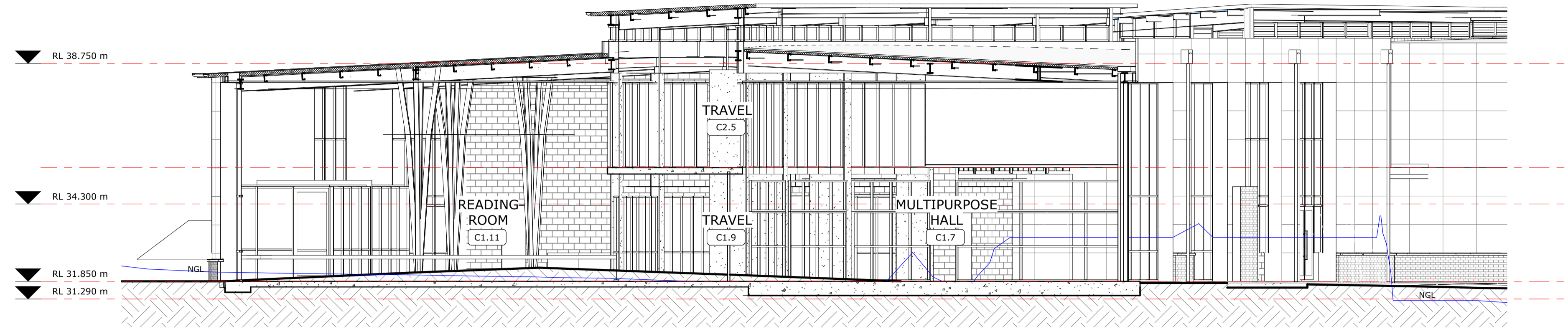
DRAWING
BLD B - SECTIONS - SHEET 1

PROJECT
MARIST COLLEGE PENSHURST - STH HURSTVILLE SITE (14C11)

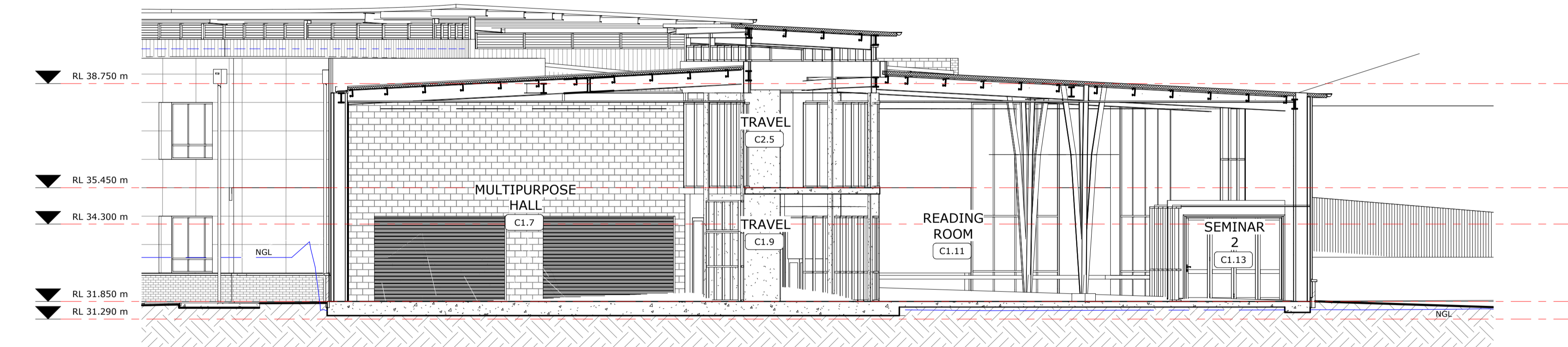
LOT 4 DP 790242 CITY SOUTH HURSTVILLE
 DATE 11/16/16 FILE C:\Users\jacobr\Documents\3973_TEN_WF-17_C3008\munnslymoore.com.au
 DRAWN JH CHECKED CJ VERIFIED EI
STATUS FOR COORDINATION



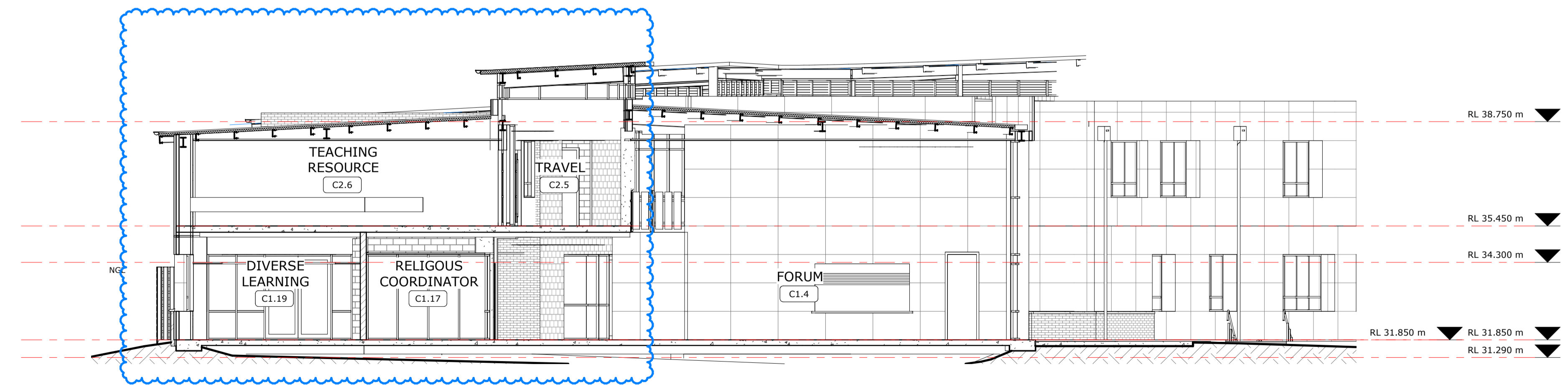
| PROJECT NO. | DRAWING NO. | REVISION |
|-------------|-------------|----------|
| 3973 | A311 | 8 |



1 BLK C- SECTION A
1 : 100



2 BLK C- SECTION B
1 : 100



3 BLK C- SECTION C
1 : 100

COPYRIGHT © MUNNS SLY MOORE ARCHITECTS 2015
 Reproduction of the whole or part of the document constitutes an infringement of copyright. The information, ideas and concepts contained in this document are confidential. The recipient(s) of this document is/are prohibited from disclosing such information, ideas and concepts to any person without the prior written consent of the copyright holder.

- NOTES
1. Use figured dimensions. Do not scale from drawings.
 2. All dimensions are in millimetres, except levels and drawings to scale of 1:500 and smaller which are given in metres.
 3. Drawings to be read in conjunction with specifications and/or schedules.
 4. Contractor to verify all dimensions and levels on site prior to commencing any work or making of shop drawings, and seek instructions if any discrepancies are found.

| NO. | DATE | DESCRIPTION |
|-----|----------|-----------------------|
| 8 | 7/12/17 | ISSUE FOR DA |
| 7 | 10/11/17 | 60% ISSUE |
| 6 | 21/09/17 | FOR COORDINATION |
| 5 | 29/08/17 | INFORMATION ONLY |
| 4 | 16/06/17 | ISSUE FOR DA APPROVAL |
| 3 | 08/05/17 | FOR COORDINATION |
| 2 | 10/02/17 | FOR INFORMATION |
| 1 | 14/12/16 | FOR INFORMATION |

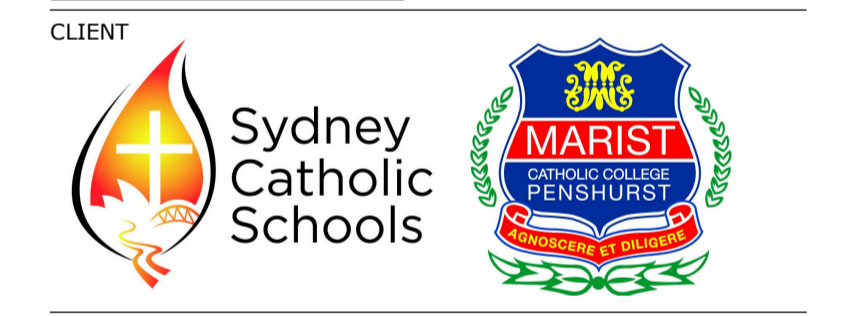
STRUCTURAL + ENVIRONMENTAL



HYDRAULIC + CIVIL
 AJ Whipps Consulting Group
 2/101 Union St, McMahons Point
 NSW 2060 Australia
 t: 61 2 8923 8444
 f: 61 2 8923 8484
 sydney@ajwhipps.com.au
 ajwhipps.com.au



LANDSCAPE ARCHITECT
 Umbaco
 LANDSCAPE ARCHITECTS PTY LTD
 Suite 104, 283 Alfred Street
 North Sydney NSW 2060
 T 02 9955 6772
 www.umbaco.com.au



MUNNS SLY MOORE architects

MUNNS SLY MOORE ARCHITECTS PTY LTD ABN 30 008 534 019
 9 Hall Street | PO Box 5093 | Lyneham ACT 2602 Australia
 P + 61 2 6248 8922 F + 61 2 6248 8300
 Nominated Architect Robert Sly FAIA ACT #331 NSW #6712 www.munnslymoore.com.au

DRAWING
 BLD C - SECTIONS - SHEET 1

PROJECT
 MARIST COLLEGE
 PENSHURST - STH
 HURSTVILLE SITE
 (14C11)

| LOT | DP | CITY |
|----------|--|------------------|
| 4 | 790242 | SOUTH HURSTVILLE |
| DATE | FILE | |
| 11/16/16 | C:\Users\sgab01\Documents\3973_TEN_WF-17_C3008\munnslymoore.com.au | |
| DRAWN | CHECKED | VERIFIED |
| CJ | CJ | EI |

STATUS FOR COORDINATION



| PROJECT NO. | DRAWING NO. | REVISION |
|-------------|-------------|----------|
| 3973 | A321 | 8 |

